

Mixer Rear Mount PTO Drive Shaft Replacement Procedure

Date: 09-25-14

Bulletin Name: MXR-TSB-022

Models: Bridgemaster® Mixer,
Standard Mixer, Sliding Mixer System

Units Affected: In-service dates of 2012-2013
and 2013-2014

Purpose:

McNeilus Truck and Manufacturing requires the Mixer PTO drive shaft be replaced because the shafts are suspect to breaking under certain load conditions. The PTO drive shaft can break or twist, causing the drum to stop rotating. If the drive shaft fails, the truck can still be steered and can be stopped safely if it is in transit. You must replace the PTO drive shaft, even if you have recently replaced it.

Notice:

- This bulletin should be read and understood in its entirety before performing this update procedure.
- All procedures outlined in the bulletin must be performed by skilled service personnel. Refer to the product service manual for descriptions of maintenance procedures.

SAFETY NOTICE

Before entering the Mixer drum or performing any maintenance to the Mixer, read and follow OSHA Regulations concerning entry and working in "CONFINED SPACE" OSHA 1910.146 and "LOCKOUT/TAGOUT" OSHA 1910.147.

Follow OSHA Regulations while performing any work to the Mixer.

Follow all safety instructions in your McNeilus Mixer Manual.

Shut off truck engine, lock cab doors, and keep keys in your pocket before entering drum, or performing any work to the Mixer.

Place magnetic "DANGER" signs on both cab doors. Failure to do so can result in serious personal injury or death.

If you have any questions regarding this notice or require further assistance, call McNeilus Truck and Manufacturing, Inc. at 888-686-7278.

Parts Required:

Purchase parts from McNeilus Truck and Manufacturing, Inc. at 888-686-7278.

Tools and Equipment Required (Customer to supply own):

- Tape measure
- Ratchet extension
- Wrenches (see procedure for varying sizes)
- Red Loctite
- Blue Loctite

Parts Required per Truck (Purchase from McNeilus):

Item	Part Number	Description	Qty.
1	Varies - See Attached Part Number Pages	PTO Drive Shaft	1
2	1104280	PTO Strap Kit for attaching PTO on the pump side	1
3	Hardware for bolting the PTO drive shaft to the REPTO (rear engine side)		
	1136680	SCR, CAP, HEX .44-14X1.50 G8 ZY	4
	0120278	WASH, FLT .44X.94X.08 ZY HND	4
	1245251	NUT, HEX, LKDT .44-14 G9 ZY	4

Reimbursement of Costs:

Upon receipt of the parts, complete the PTO Drive Shaft Replacement Procedure for each affected unit. The time of accomplishment may vary due to a number of factors; however, the estimated time for completion of the procedure is 1 hour under normal circumstances. Affected units shall be repaired using the customer’s own qualified service technicians.

For Units with in-service dates of:

June 2013 - June 2014 (1st year under warranty), **Parts and Labor will be reimbursed.**

June 2012 - June 2013 (2nd year under warranty), **Parts only will be reimbursed.**

Labor Reimbursement:

In order to receive credit if you qualify, claims must be submitted through the McNeilus Warranty claim system. Claims must be received within 30 days of the repair. Claims must include the McNeilus serial number of the truck, the customer asset number, and the number of this bulletin. NOTE: One claim per truck.

Labor Reimbursement: 1 Hour

Parts Reimbursement:

Parts and ground shipping will be reimbursed to the customer. Parts necessary for this repair must be ordered from McNeilus Parts at 888-686-7278.

Claims must be submitted through the McNeilus Warranty claim system. Claims must be received within 30 days of the repair. Claims must include the McNeilus serial number of the truck, the customer asset number, and this bulletin’s number. NOTE: One claim per truck.

Deadline:

If required, this service update should be performed at the earliest opportunity. The following terms must be met to qualify for reimbursement cost.

- For reimbursement, a warranty claim form with proof of installation must be submitted by: **March 19, 2015**
- You must submit photos of the destroyed part after the replacement.

Contact:

If you have questions or need further information, please contact a National Service Representative at 1-888-686-7278.

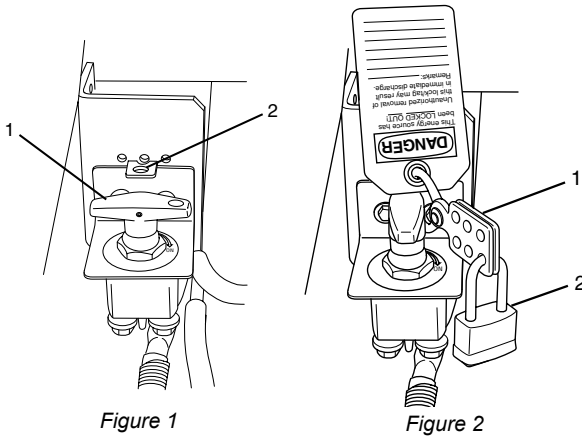
PROCEDURE 1: Determine Part Number or Length of PTO Drive Shaft

1.1 Safety Set-Up

1. Place unit on a flat surface, block truck tires, and observe all conditions of the Safety Notice concerning Lockout/Tagout posted in this bulletin.
2. Battery Disconnect Switch

If your vehicle is equipped with a BATTERY DISCONNECT switch, it is located near the battery box. Use the battery disconnect switch when performing any maintenance so the vehicle cannot accidentally be started.

1. Turn the battery disconnect switch (Figure 1, Item 1) counterclockwise so the hole on the switch aligns with the hole in the bracket (Figure 1, Item 2).
2. Install the safety lockout device ring (Figure 2, Item 1) through the holes on the battery disconnect switch and the bracket.
3. Install a padlock (Figure 2, Item 2) onto the safety lockout device ring, lock it, and put the key in your pocket. If more than one person is working on the vehicle, each person must install his or her own padlock.



Battery Cable Disconnect

If your vehicle is not equipped with a battery disconnect switch, disconnect the negative (black) battery cable first, then disconnect the positive (red) cable.

⚠ WARNING
<p>For trucks with battery cables, to prevent accidental vehicle start-up, which could cause death or serious injury, disconnect battery cables (negative cable first) before proceeding.</p> <p>Disconnect negative (-) battery cable first. If positive (+) cable should contact ground with negative (-) cable connected, the resulting sparks can cause a battery explosion, which could result in death or serious injury.</p>

1.2 Determine Part Number or Length of PTO Drive Shaft

The part number or length of the drive shaft is needed to determine which new drive shaft is required.

1. Locate the PTO drive shaft on the Mixer. One end of the drive shaft should be under the PTO cover and is attached to the pump, the other end is underneath the cab (Rear Engine PTO [REPTO] end) (Figure 3). In most cases, you can access the shaft from above, and do not need to get underneath the chassis/cab.

PTO drive shaft
cover and shaft



Figure 3: PTO drive shaft location (cover is on the shaft).

2. Remove and retain the PTO cover and hardware (Figure 4).

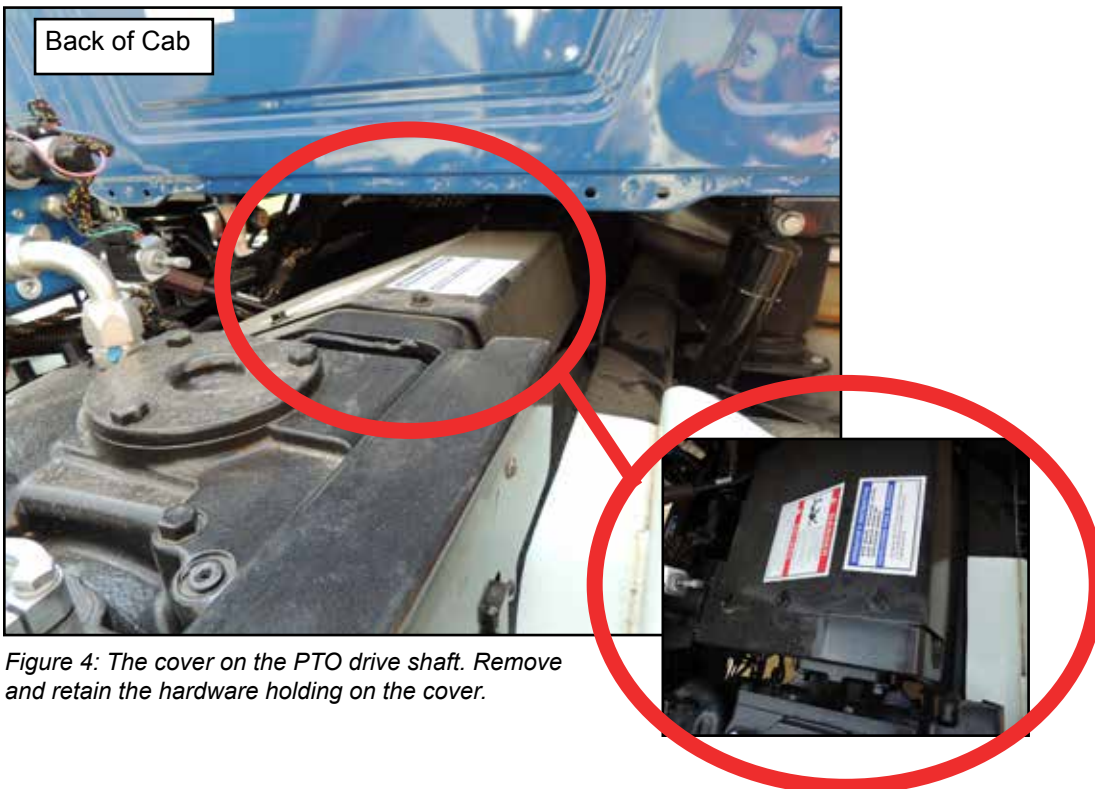


Figure 4: The cover on the PTO drive shaft. Remove and retain the hardware holding on the cover.

3. a. Locate the PTO drive shaft Part Number listed on the tag attached to the drive shaft.

OR

- b. If no tag is found, you must disconnect the drive shaft from the slip yoke (pump) end. Collapse the drive shaft, and take the measurement of the drive shaft length from the center of the universal joint on the slip yoke (pump) end to the center of the universal joint on the Rear Engine PTO (REPTO) end (see Figure 5) (this is the collapsed length). Reconnect the drive shaft to the slip yoke end.
4. Find the existing (**OLD**) **PTO drive shaft Part Number or appropriate length** listed on the enclosed Part Number List attached to this bulletin.
5. Order the **New Part Number** that is listed below the Old (existing) Part Number on the Part Number List. Call 888-686-7278 to purchase parts.

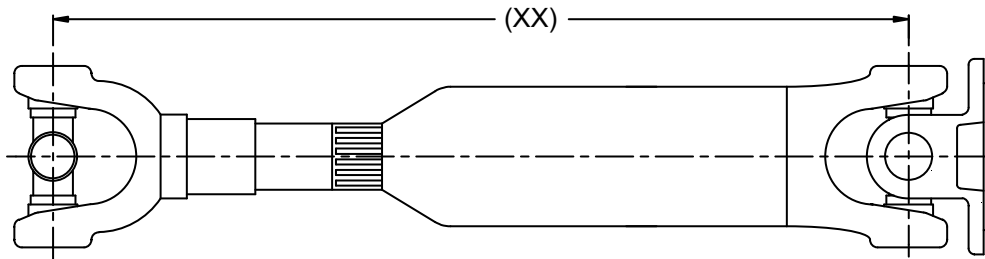


Figure 5: Measure the install length of the PTO drive shaft to determine which new part you need.

6. After measurement, reinstall the PTO cover with the retained hardware.

PROCEDURE 2: Replace PTO Drive Shaft

When you receive the new PTO drive shaft, follow these steps to remove the old drive shaft and install the new drive shaft.

2.1 Safety Set-Up

1. Place unit on a flat surface, block truck tires, and observe all conditions of the Safety Notice concerning Lockout/Tagout posted in this bulletin.
2. Battery Disconnect Switch

If your vehicle is equipped with a BATTERY DISCONNECT switch, it is located near the battery box. Use the battery disconnect switch when performing any maintenance so the vehicle cannot accidentally be started.

1. Turn the battery disconnect switch (Figure 6, Item 1) counterclockwise so the hole on the switch aligns with the hole in the bracket (Figure 6, Item 2).
2. Install the safety lockout device ring (Figure 7, Item 1) through the holes on the battery disconnect switch and the bracket.
3. Install a padlock (Figure 7, Item 2) onto the safety lockout device ring, lock it, and put the key in your pocket. If more than one person is working on the vehicle, each person must install his or her own padlock.

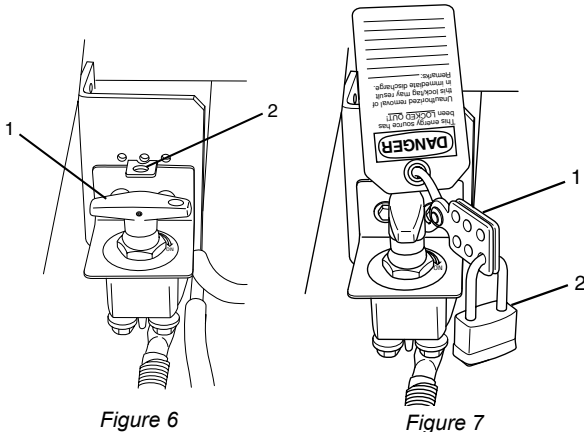


Figure 6

Figure 7

Battery Cable Disconnect

If your vehicle is not equipped with a battery disconnect switch, disconnect the negative (black) battery cable first, then disconnect the positive (red) cable.

⚠ WARNING

For trucks with battery cables, to prevent accidental vehicle start-up, which could cause death or serious injury, disconnect battery cables (negative cable first) before proceeding.

Disconnect negative (-) battery cable first. If positive (+) cable should contact ground with negative (-) cable connected, the resulting sparks can cause a battery explosion, which could result in death or serious injury.

2.2 Remove Old PTO Drive Shaft

1. Remove the PTO cover, bolts, and nuts (Figure 8). The cover is over the drive shaft slip yoke/pump side. Retain the cover and hardware for reuse.

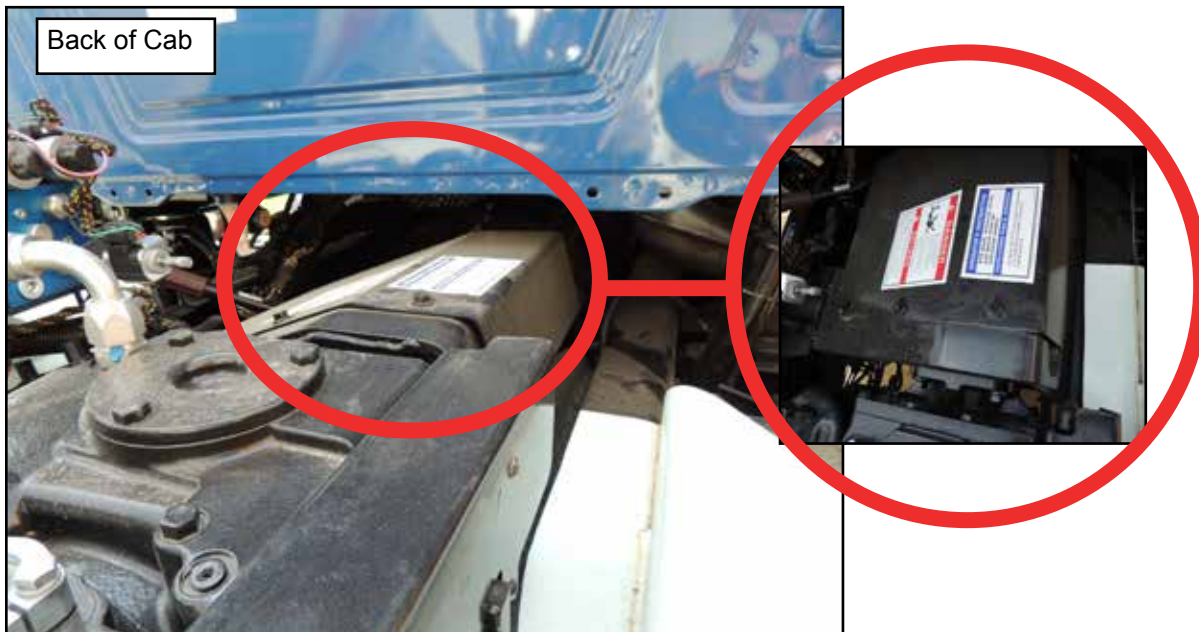


Figure 8: The cover on the PTO drive shaft.

2. Unbolt and discard the four bolts and washers that attach the **drive shaft to the pump** (Figure 9). The drive shaft on this side is now loose.



Figure 9: Representation of the four bolts and washers that attach the drive shaft to the pump.

3. Unbolt and discard the four bolts, washers, and nuts that attach the other side of the **drive shaft to the REPTO (engine side)** under the cab (Figure 10). Depending on the configuration of items on the chassis, you may need to use a ratchet extension OR reach the bolts from under the chassis.



Figure 10: Four bolts and washers that attach the drive shaft to the pump.

4. Remove and destroy the drive shaft.
 - Review the warranty reimbursement section for more information after destroying the drive shaft if you qualify for reimbursement.

2.3 Install New PTO Drive Shaft

1. Install the **new PTO drive shaft by first bolting it to the REPTO (engine side)** under the cab (Figure 11) using Red Loctite applied to the four new bolts (PN 1136680), washers (PN 0120278), and nuts (PN 1245251). Depending on the configuration of items on the chassis, you may need to support the drive shaft in order to align it to the bolt pattern. Use a second person to support the shaft. You may also need to use a ratchet extension **OR** reach the bolts from under the chassis. Use a torque wrench to **torque the bolts to 52 ft-lbs.**



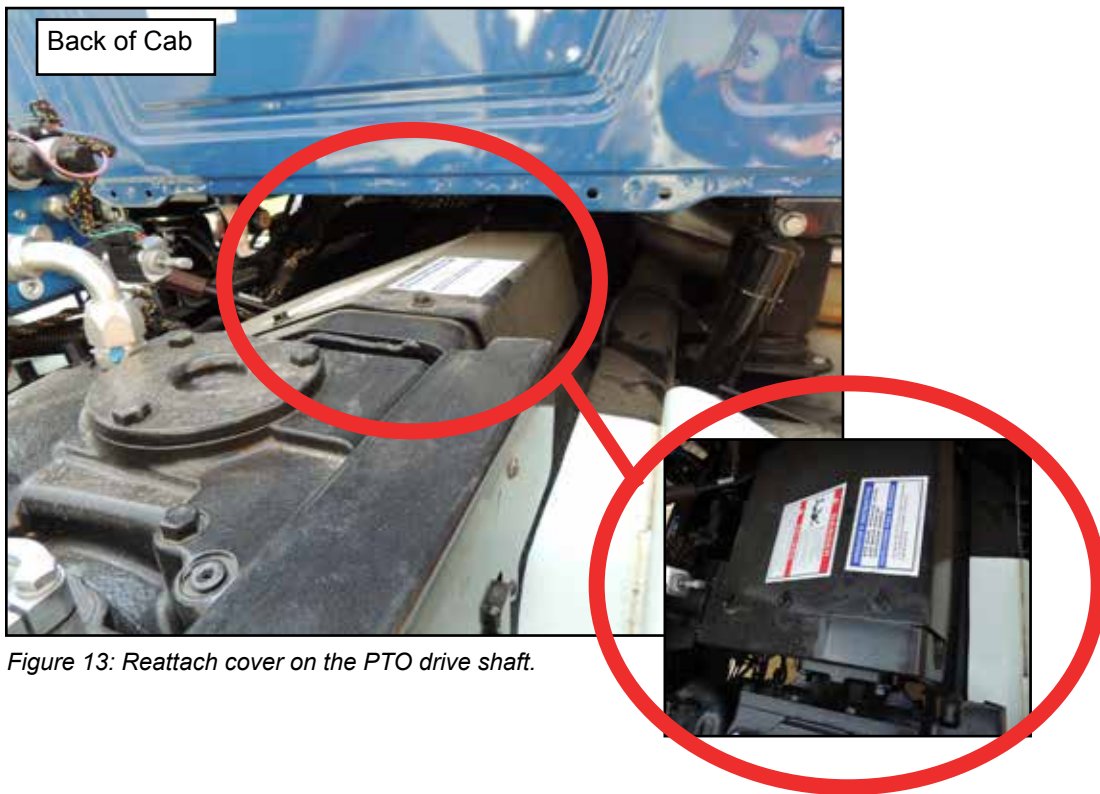
Figure 11: Four bolts and washers that attach the drive shaft to the REPTO (engine side).

2. Use the PTO Strap Kit P/N 1104280 and Blue Loctite to attach the drive shaft yoke side to the pump (Figure 12). Use a torque wrench to **torque the bolts to 35 ft-lbs.**



Figure 12: Representation: Use the PTO strap kit that attaches the drive shaft to the pump.

3. Reattach the PTO cover on the pump side of the drive shaft using the retained bolts and nuts (Figure 13).



4. Procedure is complete. Remove Lockout/Tagout and return truck to service.

Continuous Improvement:

The change included in this bulletin is part of the McNeilus® Continuous Improvement Process.

McNeilus® Company's quality policy is Providing Customer Satisfaction through Innovative Products, Dedicated Service, and a constant focus on Continuous Improvement.

"The Customer is our Boss!"



(888) 686-7278

www.streetsmartparts.com

**One Number. One Call.
One Solution.**

MXR-TSB-022 - PTO Drive Shaft Replacement

Description		41 IN COLLASPED LENGTH
Old Part Number	1148687	PSHAFT,1350,2.50X41.00X2.50
New Part Number	1508570	PSHAFT,1350,2.5X41X2.5X.12
Description		46 IN COLLASPED LENGTH
Old Part Number	1148692	PSHAFT,1350,2.50X46.00X2.50
New Part Number	1508603	PSHAFT,1350,2.5X46X2.5X.12
Description		48.00 IN COLLASPED LENGTH
Old Part Number	1148694	PSHAFT,1350,2.50X48.00X2.50
New Part Number	1508590	PSHAFT,1350,2.5X48X2.5X.12
Description		46 IN COLLASPED LENGTH
Old Part Number	1271657	PSHAFT-1350,2.50X46.00X2.50,NG
New Part Number	1508605	PSHAFT,1350,2.5X46X2.5X.12NG
Description		41 IN COLLASPED LENGTH
Old Part Number	1271653	PSHAFT-1350,2.50X41.00X2.50,NG
New Part Number	1508572	PSHAFT,1350,2.5X41X2.5X.12NG
Description		53 IN COLLASPED LENGTH
Old Part Number	1271665	PSHAFT-1350,2.50X53.00X2.50,NG
New Part Number	1508597	PSHAFT,1350,2.5X53X2.5X.12NG
Description		48.00 IN COLLASPED LENGTH
Old Part Number	1271659	PSHAFT-1350,2.50X48.00X2.50,NG
New Part Number	1508592	PSHAFT,1350,2.5X48X2.5X.12NG
Description		40 IN COLLASPED LENGTH
Old Part Number	1496503	PSHAFT,SPC2015,2.50X40X2.50 NG
New Part Number	1508618	PSHAFT,SP2015,2.5X40X2.5X.12NG
Description		34 IN COLLASPED LENGTH
Old Part Number	1496974	PSHAFT,SPC2015,2.50X34X2.50 NG
New Part Number	1508620	PSHAFT,SP2015,2.5X34X2.5X.12NG
Description		30 IN COLLASPED LENGTH
Old Part Number	1496978	PSHAFT,SPC2015,2.50X30X2.50 NG
New Part Number	1508622	PSHAFT,SP2015,2.5X30X2.5X.12NG
Description		41 IN COLLASPED LENGTH
Old Part Number	1499279	PSHAFT,1350,2X41X2.5X.16NG
New Part Number	1508571	PSHAFT,1350,2.0X41X2.5X.22NG
Description		41 IN COLLASPED LENGTH
Old Part Number	1499269	PSHAFT,1350,2.0X41X2.5X.16
New Part Number	1508569	PSHAFT,1350,2.0X41X2.5X.22
Description		46 IN COLLASPED LENGTH
Old Part Number	1499278	PSHAFT,1350,2.0X46X2.5X.16NG
New Part Number	1508604	PSHAFT,1350,2.0X46X2.5X.22NG
Description		46 IN COLLASPED LENGTH
Old Part Number	1501384	PSHAFT,1350,2.0X46X2.5X.16
New Part Number	1508602	PSHAFT,1350,2.0X46X2.5X.22

MXR-TSB-022 - PTO Drive Shaft Replacement

Description		17 IN COLLASPED LENGTH
Old Part Number	1148609	PSHAFT,1350,FLG U JNT 17.00
New Part Number	1509880	PSHAFT,1350,2.0X17X2.5X.22
Description		17 IN COLLASPED LENGTH
Old Part Number	1171091	SHAFT,PTO,17" W/U-JNT 2.5"1350
New Part Number	1509916	PSHAFT,1350,2.5X17.00X2.5X.12
Description		13 IN COLLASPED LENGTH
Old Part Number	1256145	SHAFT-PTO,13" W/U-JNT 2.5"1350
New Part Number	1509920	PSHAFT,1350,2.5X13.00X2.5X.12
Description		50 IN COLLASPED LENGTH
Old Part Number	1171113	SHAFT-PTO,50",W/U-JNT 2.5"1350
New Part Number	1508594	PSHAFT,1350,2.5X50X2.5X.12
Description		46 IN COLLASPED LENGTH
Old Part Number	1148692	PSHAFT,1350,2.50X46.00X2.50
New Part Number	1508603	PSHAFT,1350,2.5X46X2.5X.12
Description		44 IN COLLASPED LENGTH
Old Part Number	1171107	SHAFT-PTO,44",W/U-JNT 2.5"1350
New Part Number	1508578	PSHAFT,1350,2.5X44X2.5X.12
Description		43 IN COLLASPED LENGTH
Old Part Number	1148689	PSHAFT,1350,2.50X43.00X2.50
New Part Number	1508574	PSHAFT,1350,2.5X43X2.5X.12
Description		41 IN COLLASPED LENGTH
Old Part Number	1271653	PSHAFT-1350,2.50X41.00X2.50,NG
New Part Number	1508572	PSHAFT,1350,2.5X41X2.5X.12NG
Description		44 IN COLLASPED LENGTH
Old Part Number	1261076	PSHAFT,1350,2.50X44.00X2.50
New Part Number	1509859	PSHAFT,1350,2.5X44X2.5X.12NG
Description		46 IN COLLASPED LENGTH
Old Part Number	1271657	PSHAFT-1350,2.50X46.00X2.50,NG
New Part Number	1508605	PSHAFT,1350,2.5X46X2.5X.12NG
Description		49 IN COLLASPED LENGTH
Old Part Number	1261078	PSHAFT,1350,2.50X49.00X2.50
New Part Number	1509861	PSHAFT,1350,2.5X49X2.5X.12NG
Description		50 IN COLLASPED LENGTH
Old Part Number	1261079	PSHAFT,1350,2.50X50.00X2.50
New Part Number	1509490	PSHAFT,1350,2.5X50X2.5X.12NG
Description		28 IN COLLASPED LENGTH
Old Part Number	0000728	PSHAFT,1310,2.00X28.00X2.50
New Part Number	1509863	PSHAFT,1310,2.5X28X2.5X.12
Description		52.32 IN COLLASPED LENGTH
Old Part Number	1261641	PSHAFT,SPC2015,FLG 52.32X2.36
New Part Number	1509865	PSHAFT,SPC2015,2.5X49X2.5X.12

MXR-TSB-022 - PTO Drive Shaft Replacement

Description		37.82 IN COLLASPED LENGTH
Old Part Number	1255073	PSHAFT,SPC2015,FLG 37.82X2.36
New Part Number	1509869	PSHAFT,SPC2015,2.5X38X2.5X.12
Description		27 IN COLLASPED LENGTH
Old Part Number	1263219	PSHAFT,SPL1350,FLG,U JNT 27.00
New Part Number	1509875	PSHAFT,1350,2.5X27X2.5X.12NG
Description		35 IN COLLASPED LENGTH
Old Part Number	1263220	PSHAFT,1350,2.50X35.00X2.50
New Part Number	1509877	PSHAFT,1350,2.5X35X2.5X.12NG
Description		39 IN COLLASPED LENGTH
Old Part Number	1263221	PSHAFT,1350,2.50X39.00X2.50
New Part Number	1509891	PSHAFT,1350,2.5X39X2.5X.12NG
Description		43 IN COLLASPED LENGTH
Old Part Number	1263222	PSHAFT,1350,2.50X43.00X2.50
New Part Number	1508576	PSHAFT,1350,2.5X43X2.5X.12NG
Description		39.82 IN COLLASPED LENGTH
Old Part Number	1263341	PSHAFT,SPC2015,FLG 39.82X2.36
New Part Number	1509873	PSHAFT,SPC2015,2.5X40X2.5X.12
Description		49 IN COLLASPED LENGTH
Old Part Number	1267656	PSHAFT,SPC2015,FLG 52.32X2.36
New Part Number	1509867	PSHAFT,SP2015,2.5X49X2.5X.12NG
Description		34 IN COLLASPED LENGTH
Old Part Number	1267655	PSHAFT,SPC2015,FLG 37.82X2.36
New Part Number	1509925	PSHAFT,SP2015,2.5X34X2.5X.12NG
Description		12 IN COLLASPED LENGTH
Old Part Number	1148604	PSHAFT,1350, FLG,U-JOINT 12.00
New Part Number	1509881	PSHAFT,1350,2.0X12X2.5X.22
Description		15 IN COLLASPED LENGTH
Old Part Number	1148607	PSHAFT,1350,FLG,U-JOINT 15.00
New Part Number	1509882	PSHAFT,1350,2.0X15X2.5X.22
Description		18 IN COLLASPED LENGTH
Old Part Number	1148610	PSHAFT,1350, FLG,U-JOINT18.00
New Part Number	1509883	PSHAFT,1350,2.0X18X2.5X.22
Description		17 IN COLLASPED LENGTH
Old Part Number	1148609	PSHAFT,1350,FLG U JNT 17.00
New Part Number	1509880	PSHAFT,1350,2.0X17X2.5X.22
Description		15 IN COLLASPED LENGTH
Old Part Number	1148607	PSHAFT,1350,FLG,U-JOINT 15.00
New Part Number	1509882	PSHAFT,1350,2.0X15X2.5X.22
Description		16 IN COLLASPED LENGTH
Old Part Number	1148820	PSHAFT,1310,U JNT 16.00
New Part Number	1509884	PSHAFT,UJNT,1310,2X16X2.5X.22

MXR-TSB-022 - PTO Drive Shaft Replacement

Description		19 IN COLLASPED LENGTH
Old Part Number	1148611	PSHAFT,1350,FLG U JNT 19.00
New Part Number	1509885	PSHAFT,1350,2.0X19X2.5X.22
Description		19 IN COLLASPED LENGTH
Old Part Number	1148611	PSHAFT,1350,FLG U JNT 19.00
New Part Number	1509885	PSHAFT,1350,2.0X19X2.5X.22
Description		41 IN COLLASPED LENGTH
Old Part Number	1148687	PSHAFT,1350,2.50X41.00X2.50
New Part Number	1508570	PSHAFT,1350,2.5X41X2.5X.12
Description		52 IN COLLASPED LENGTH
Old Part Number	1271664	PSHAFT-1350,2.50X52.00X2.50,NG
New Part Number	1508580	PSHAFT,1350,2.5X52X2.5X.12NG
Description		52 IN COLLASPED LENGTH
Old Part Number	1148698	PSHAFT,1350,2.50X52.00X2.50
New Part Number	1509887	PSHAFT,1350,2.5X52X2.5X.12
Description		14 IN COLLASPED LENGTH
Old Part Number	1148651	PSHAFT,1350,2.50X14.00X2.50
New Part Number	1509889	PSHAFT,1350,2.5X14X2.5X.12
Description		36 IN COLLASPED LENGTH
Old Part Number	1339720	PSHAFT,1350,FLG 39.25X2.50 SPL
New Part Number	1509891	PSHAFT,1350,2.5X36X2.5X.12NG
Description		36.00 IN COLLASPED LENGTH
Old Part Number	1340505	PSHAFT,1350,FLG 36.00X2.50 SPL
New Part Number	1509893	PSHAFT,1350,2.5X33X2.5X.12NG
Description		39 IN COLLASPED LENGTH
Old Part Number	1341199	PSHAFT,1350,FLG 39.25X2.50
New Part Number	1509895	PSHAFT,1350,2.5X39X2.5X.12
Description		53 IN COLLASPED LENGTH
Old Part Number	1148699	PSHAFT,1350,2.50X53.00X2.50
New Part Number	1509897	PSHAFT,1350,2.5X53X2.5X.12
Description		48 IN COLLASPED LENGTH
Old Part Number	1271659	PSHAFT-1350,2.50X48.00X2.50,NG
New Part Number	1508592	PSHAFT,1350,2.5X48X2.5X.12NG
Description		48 IN COLLASPED LENGTH
Old Part Number	1148694	PSHAFT,1350,2.50X48.00X2.50
New Part Number	1508590	PSHAFT,1350,2.5X48X2.5X.12
Description		16 IN COLLASPED LENGTH
Old Part Number	1148608	PSHAFT,1350,2.00X16.00X2.50
New Part Number	1509898	PSHAFT,1350,2.0X16X2.5X.22
Description		20 IN COLLASPED LENGTH
Old Part Number	1148612	PSHAFT,1350,2.00X20.00X2.50
New Part Number	1508627	PSHAFT,1350,2.0X20X2.5X.22

MXR-TSB-022 - PTO Drive Shaft Replacement

Description		12 IN COLLASPED LENGTH
Old Part Number	1148604	PSHAFT,1350,FLG,U-JOINT 12.00
New Part Number	1509881	PSHAFT,1350,2.0X12X2.5X.22
Description		44 IN COLLASPED LENGTH
Old Part Number	1148637	PSHAFT,1350,2.00X44.00X2.50
New Part Number	1508577	PSHAFT,1350,2.0X44X2.5X.22
Description		27 IN COLLASPED LENGTH
Old Part Number	1148619	PSHAFT,1350,2.00X27.00X2.50
New Part Number	1509899	PSHAFT,1350,2.0X27X2.5X.22
Description		33 IN COLLASPED LENGTH
Old Part Number	1148625	PSHAFT,1350,2.00X33.00X2.50
New Part Number	1508625	PSHAFT,1350,2.0X33X2.5X.22
Description		17 IN COLLASPED LENGTH
Old Part Number	1459969	PSHAFT,1350,FLG,ZC U-JNT,17
New Part Number	1509880	PSHAFT,1350,2.0X17X2.5X.22
Description		40 IN COLLASPED LENGTH
Old Part Number	1462394	PSHAFT,SPC2015,2.00X40.00X2.50
New Part Number	1509906	PSHAFT,SP2015,2.5X40X2.5X.12
Description		34 IN COLLASPED LENGTH
Old Part Number	1465877	PSHAFT,SPC2015,2.00X34.00X2.50
New Part Number	1508620	PSFT,SPC2015,2.5X34X2.5X.12NG
Description		30 IN COLLASPED LENGTH
Old Part Number	1467937	PSHAFT,SPC2015,2.00X30.00X2.50
New Part Number	1509903	PSHAFT,SPC2015,2.5X30X2.5X.12