

**Inspection for weld seam cracking on
aluminum water tanks on Mixers**

Date: April 18, 2019
Bulletin Name: MXR-TSIB-031
Model: Bridgemaster model 93 and
Standard Mixer model 90
Model Year: 2018-2019
Units Affected: Mixers with aluminum water
tanks

Purpose:

This bulletin outlines an inspection procedure to inspect Bridgemaster and Standard mixers that have aluminum water tanks for cracking on the weld seams on the tank. If cracking is found, the tank must be replaced. The suspect population is Bridgemaster and Standard mixer trucks with aluminum water tanks shipped/in-service date July 1, 2018 to March 31, 2019.

Notice:

- This bulletin should be read and understood in its entirety before performing this procedure.
- All procedures outlined in the bulletin must be performed by skilled service personnel. Refer to the product service manual for descriptions of maintenance procedures.

SAFETY NOTICE

Perform your company’s Lockout/Tagout procedure. If your company does not have a Lockout/Tagout procedure, follow OSHA 1910.147 and 1910.146 Confined Space as appropriate.

SAFETY NOTICE

Use appropriate Personal Protective Equipment (PPE) as required by your company.

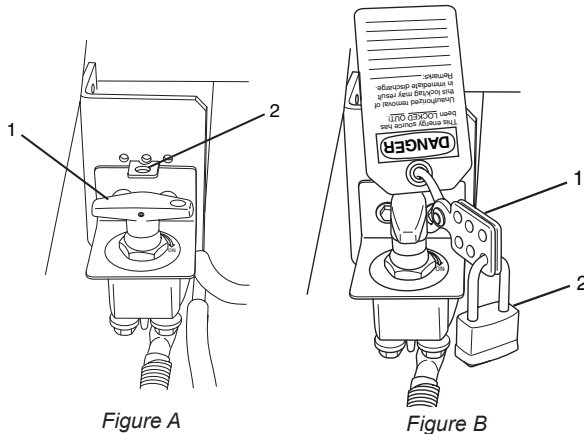
This bulletin is limited to Internal McNeilus Use Only.

Procedure:

1. Perform your company's Lockout/Tagout procedure. If your company does not have a Lockout/Tagout procedure, follow OSHA 1910.147 and 1910.146 Confined Space as appropriate. Chock the vehicle's wheels and place the vehicle in park with the parking brake engaged.
2. Battery Disconnect Switch

If your vehicle is equipped with a BATTERY DISCONNECT switch, it is located near the battery box. Use the battery disconnect switch when performing any maintenance so the vehicle cannot accidentally be started.

1. Turn the battery disconnect switch (Figure A, Item 1) counterclockwise so the hole on the switch aligns with the hole in the bracket (Figure A, Item 2).
2. Install the safety lockout device ring (Figure B, Item 1) through the holes on the battery disconnect switch and the bracket.
3. Install a padlock (Figure B, Item 2) onto the safety lockout device ring, lock it, and put the key in your pocket. If more than one person is working on the vehicle, each person must install his or her own padlock.



Battery Cable Disconnect

⚠ WARNING

For trucks without a battery disconnect switch, to prevent accidental vehicle start-up, which could cause death or serious injury, disconnect battery cables (negative cable first) before proceeding.

Disconnect negative (-) battery cable first. If positive (+) cable should contact ground with negative (-) cable connected, the resulting sparks can cause a battery explosion, which could result in death or serious injury.

3. Depressurize the water tank (follow instructions found in the operator's manual).
4. Inspect the water tank for cracks along the weld seams of both end caps (Figure 1). Check all the way around the tank.
 - If no cracks are found, the procedure is complete. Remove your company's Lockout/Tagout procedure. If your company does not have a Lockout/Tagout procedure, follow OSHA 1910.147 and 1910.146 Confined Space as appropriate. Remove the chocks from the vehicle's wheels and take the vehicle out of park.
 - If cracks are found, replace the water tank. Contact McNeilus Branch Parts and Service at 888-686-7278 for additional information regarding replacing the water tank. A McNeilus Branch will need to do the replacement.
 - **NOTE:** A water tank that has cracks has the possibility to fail (Figure 2 and Figure 3).

This bulletin is limited to Internal McNeilus Use Only.

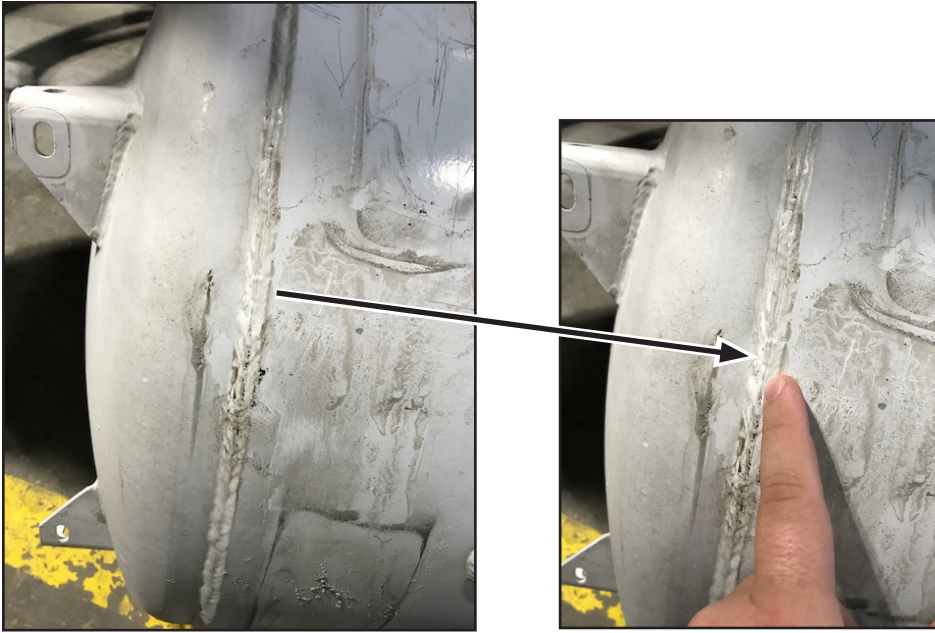


Figure 1



Figure 2



Figure 3

STREET SMART SERVICE
BY McNEILUS

(888) 686-7278

www.streetsmartparts.com